



## LEITENBERGER

Mess- und Regeltechnik GmbH

Bahnhofstraße 32/33

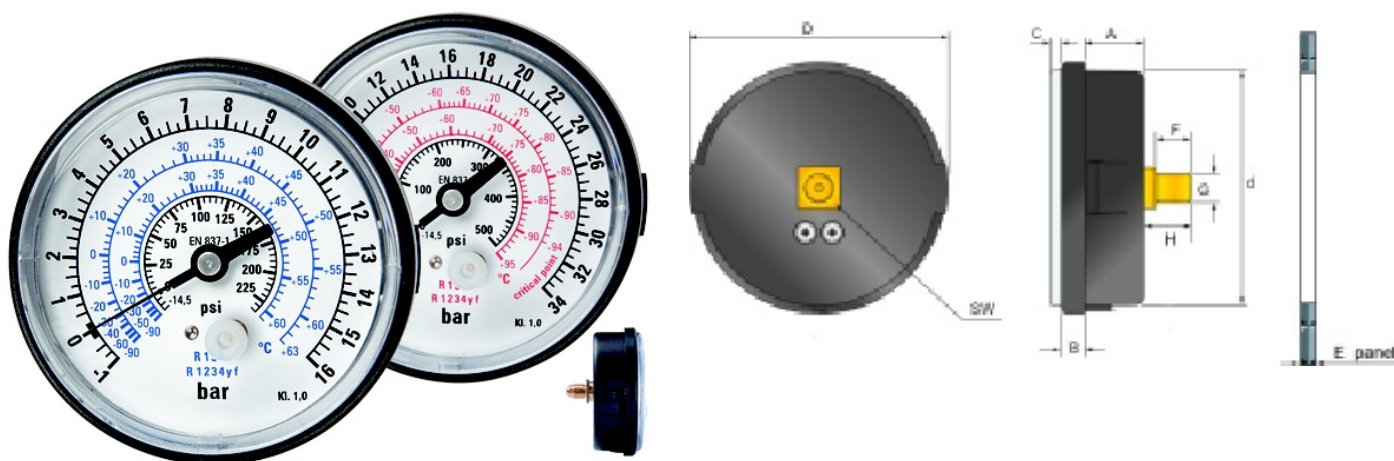
D-72138 Kirchentellinsfurt

Fon: +49 (0)7121/908-0

Fax: +49 (0)7121/908-200

E-Mail: mrt-info@leitenberger.de

## PRESSURE GAUGES TYPE MK



Type	NG	A	B	C	d	D	E	G	H	L	SW
MK8H	3.15	0.79	0.31	0.14	3.15	3.39	0.04 - 0.12	1/4 SAE or 1/8 NPT	0.63	0.51 - 0.39	0.55

- Case: ABS, black
- Window: plexiglass
- socket: 1/4" SAE, back, OT 58 brass
- Elastic element: phosphor bronze
- Movement: gearing, OT 59 brass
- Dial: white
- Pointer: black oxidized aluminium
- Range: High = -1/+38 bar or 14,50/500 psi  
Low = -1/+18 bar or 14,50/260 psi
- Accuracy: cl. 1,6
- Ambient-T: +15 / +65°C / +59/149 °F
- Process fluid-T: max. +65°C / +149 °F
- Process pressure: max. 75% of full scale value
- Over pressure: 25% of full scale value
- Protection: IP40 according IEC29
- Options on request:
  - scales for all marketable refrigerants
  - other connectors
  - strap fixing

