

04.32

FOR FRONT PANEL MOUNTING WITH 3-HOLE FRONT FLANGE (WITHOUT BIMETALL COMPENSTATION)

LEITENBERGER

Mess- und Regeltechnik GmbH

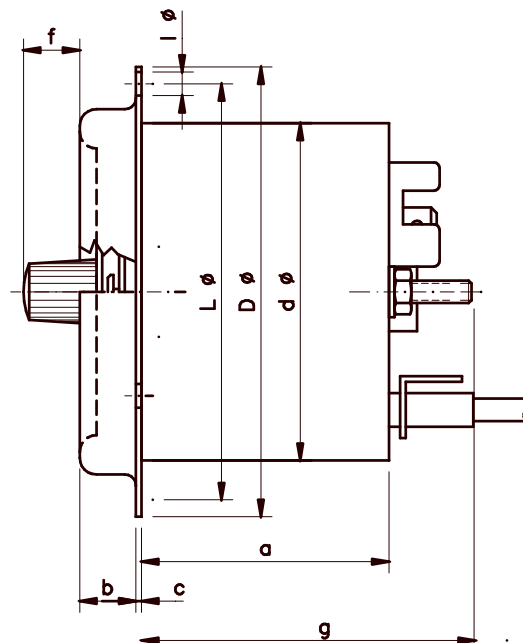
Bahnhofstraße 32/33

D-72138 Kirchentellinsfurt

Fon: +49 (0)7121/908-0

Fax: +49 (0)7121/908-200

E-Mail: mrt-info@leitenberger.de



Type	a	b	c	d	f	D	l	L	g
3060.1 F/K	2.17	0.35	0.02	2.36	0.51	3.15	0.17	2.91	2.76
3060.1 F/M	2.17	0.35	0.02	2.36	0.51	3.15	0.17	2.91	2.76

Unit: Inch

Case:	ABS black 3060.1 KB/K(D) or steel sheet anti-corrosive 3060.1 KB/M
Mounting:	front panel mounting with 3-hole front flange
Front flange:	INOX polished
Window:	glass
Measuring system:	single bourdon spring system , without bimetal compensation
Scale:	white with black prints
Scale length:	approx. 240 [°]
Graduation:	1°, 2°, 5°, 10° acc. to range
Range:	from -80 ... +380 °C -112 ... +716 °F
Accuracy:	class 2 acc. to DIN 16203
Pointer:	measuring pointer black - set pointer red
Contact:	1 single pole contact microswitch, adjustable over hole range
Contact setting:	frontside with PVC-knob
Max. Switching load:	5 A 250 V AC 40-60 Hz, non-inductiv
Differential:	approx. +2% of range "Switching at falling temperature" approx. - 2% of range "Switching at rising temperature" AMP connector, size 6.3 acc. to EN 60730
Connection:	l
Protection class:	case IP 53, terminals IP 00 acc. to DIN40 050
IP class:	CE acc. to EN 60730-1 u. 60730-2-9
Approvals:	DIN EN ISO 9001
QMS:	
Options:	- IP 55 by using a protection cap for the terminals - contact setting with screwdriver or special key - factory setted fixed set point - factory setted fixed maximum set stop

Important Advise:

**Please use RC units to protect contacts from high voltage peaks.
Inductive loads allways has to be switched by suitable relais.**