

## 04.31 FOR FRONT PANEL MOUNTING WITH 3-HOLE FRONT FLANGE

### LEITENBERGER

Mess- und Regeltechnik GmbH

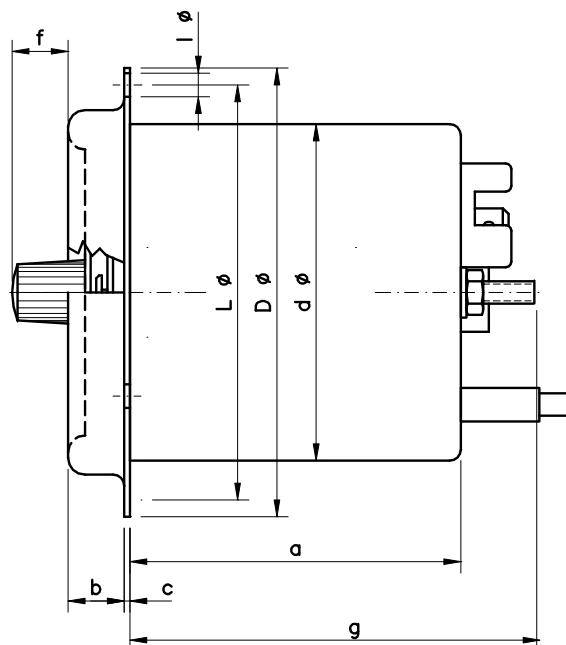
Bahnhofstraße 32/33

D-72138 Kirchentellinsfurt

Fon: +49 (0)7121/908-0

Fax: +49 (0)7121/908-200

E-Mail: mrt-info@leitenberger.de



Type	a	b	c	d	f	D	l	L	g
3060.1 F	2.36	0.35	0.02	2.36	0.51	3.15	0.17	2.91	2.95
3080.1 F	2.28	0.47	0.02	3.15	0.51	4.13	0.2	3.78	2.95
3100.1 F	2.36	0.3	0.03	4.02	0.51	5.2	0.18	4.57	2.95

Unit: Inch

Case:	steel sheet corrosion protected
Mounting:	front panel mounting with 3-hole front flange
Front flange:	INOX polished
Window:	glass
Measuring system:	double bourdon spring system , with bimetal compensation
Scale:	white with black prints
Scale length:	approx.270 <sup>°</sup>
Graduation:	1°, 2°, 5°, 10° acc. to range
Range:	from -80 ... +380 °C -112 ... +716 °F
Accuracy:	class 2 acc. to DIN 16203
Pointer:	measuring pointer black - set pointer red
Contact:	1 single pole contact microswitch, adjustable over hole
Contact setting:	range frontside with PVC-knob
Max. Switching load:	5 A 250 V AC 40-60 Hz, non-inductiv
Differential:	approx. +2% of range "Switching at falling temperature" approx. - 2% of range "Switching at rising temperature" AMP connector, size 6.3 acc. to EN 60730
Connection:	l
Protection class:	case IP 53, terminals IP 00 acc. to DIN40 050
IP class:	CE acc. to EN 60730-1 u. 60730-2-9
Approvals:	DIN EN ISO 9001
QMS:	
Options:	- IP 55 by using a protection cap for the terminals - contact setting with screwdriver or special key - factory setted fixed set point - factory setted fixed maximum set stop

### Important Advise:

**Please use RC units to protect contacts from high voltage peaks.  
Inductive loads always has to be switched by suitable relais.**