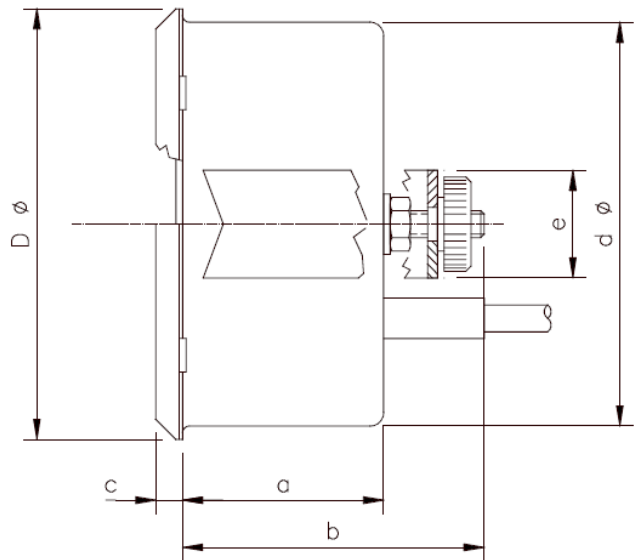


02.01 IN STEEL SHEET CASE FOR FRONTPANELMOUNTING WITH U-CLAMP



Type	a	b	c	d	D	e
1052 KB	1.18	1.97	0.16	2.05	2.2	0.63
1060 KB	1.18	1.97	0.16	2.36	2.52	0.63
1080 KB	1.18	1.97	0.16	3.15	3.31	0.63
1100 KB	1.18	1.97	0.16	3.94	4.13	0.63
1160 KB	1.18	1.97	0.16	6.3	6.61	0.63

Unit: Inch

Case:	steel sheet, NG 100 stainless steel
Mounting:	panel-mounting with u-clamp
Window:	glass, clear, temperature resistant up to 65°C or 149 °F
Front ring:	NG 52, 60, 80 and 160 - chromed NG 100 - bezel chromed
Measuring-system:	double bourdon-spring-system, with bi-metal- compensation
Scale:	white with black prints
Graduation:	1°, 2°, 5°, 10° depending to range
Range:	all between -80 ... +380 °C available -112 ...+716 °F
Accuracy:	± 2% at 23 °C or 73.4 °F ambient temperature
Options:	<ul style="list-style-type: none"> - customers logo - coloured scale - accuracy ± 1%, - front flange inox or black - drag pointer (window ABS) - ABS case - back adjustment